

# Controller for innovative dispensing

## DispensingStation

DS503 | DS803

for integrating highly productive dispensing equipment in production lines



DS503 for DosPx  
DS803 for DosGP, DosDPL

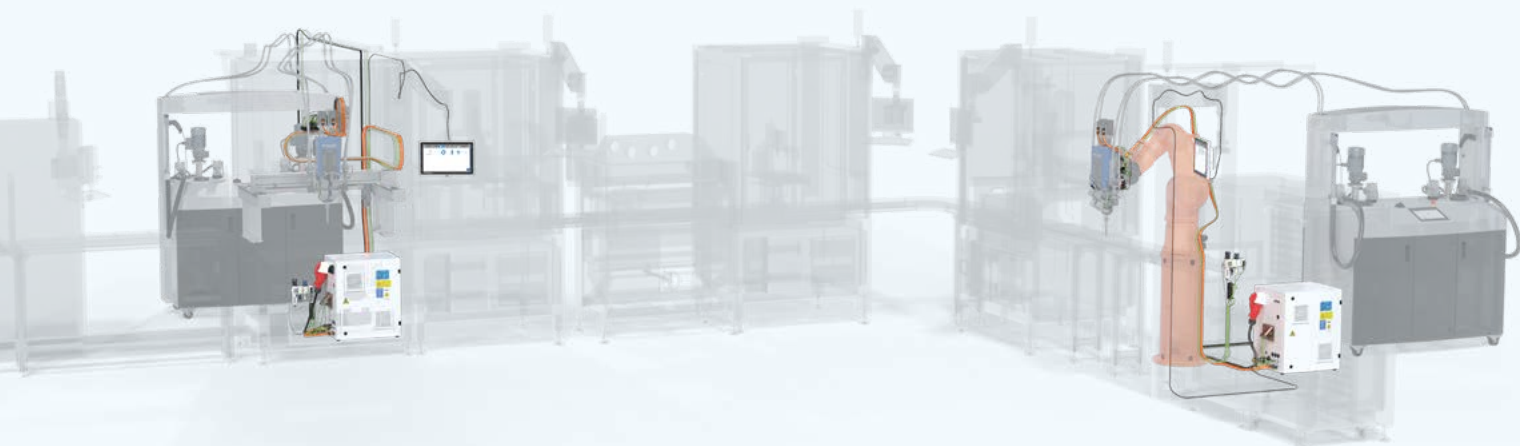
User-friendly visualization

Extensive data communication thanks  
to BUS systems

Real-time capability for synchronizing  
with external customer systems

\* Robot not included

# DispensingStation



The new DispensingStation enables the dispensing system and dispensing monitoring system to be rapidly and reliably integrated as plug-and-produce elements. Portal axis systems (left) or robot applications (right) are used for integrating in existing production lines. However, the controller can also be used for manual dispensing processes.

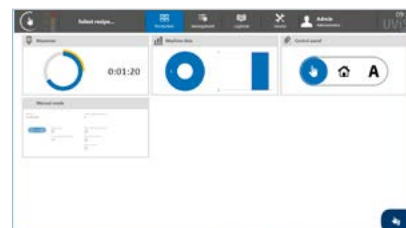
## High-performance applications

This new dispensing controller is suitable for all automated dispensing applications such as bonding, filling, sealing, coating, and applying heat-conducting pastes. It handles high-quality potting processes including process monitoring, and also allows quick and easy setup of different dispensing tasks and dispensing tools.

## Visualization

### UViSs operating concept

This operating concept is ideal for visualizing the dispensing process. Thanks to convenient lists and a flexible overview of plant and process parameters, you can keep an eye on all relevant data at all times.



### UPiCs programming tool

This tool supplements the UViSs software. It allows you to create dispensing programs quickly and easily without needing the help of specialists.

## The next stage in controlling your dispensing process

With the DS803 DispensingStation, the hardware and software functions of the new dispensing generation can be fully integrated in existing production lines. The controller is the key to high-quality potting processes and ready for new innovative dispensing functions.

Various interfaces allow for easy integration of the dispensing equipment in the production line. Multiple sensors ensure that the dispensing process is continuously monitored. The data is clearly displayed on a control panel.

In addition to integration of the dispenser via a portal axis system, a robot connection is also possible, along with real-time communication with the robot system. Thanks to integrated ProfiBUS and ProfiNet, large volumes of data in different formats can be exchanged with the DS803 DispensingStation.